

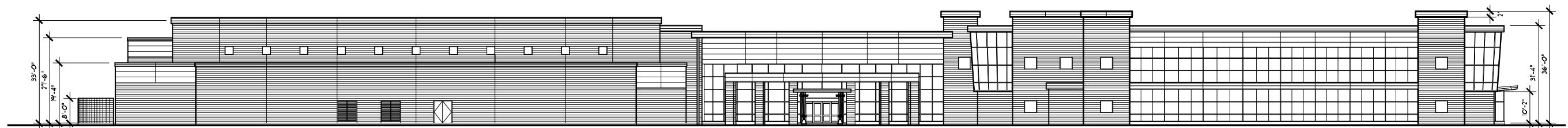


2120 20th STREET, SUITE 100
 SACRAMENTO, CALIFORNIA 95818
 TEL. 916/448-7741 FAX 916/448-0457

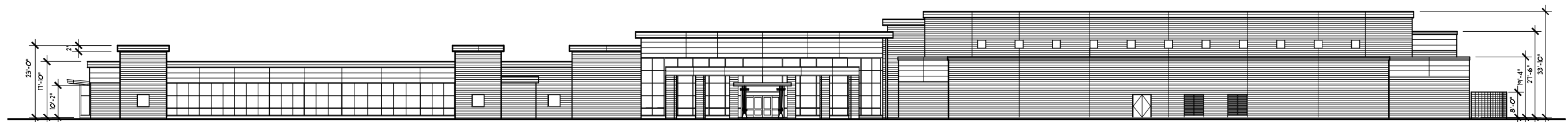


Kimley-Horn
 and Associates, Inc.

Project
**INTERAGENCY
 REGIONAL
 OPERATIONS
 CENTER**
 IDAHO
 TRANSPORTATION
 DEPARTMENT
Sheet Title



NORTH ELEVATION - OPTION 1: TWO-STORY



NORTH ELEVATION - OPTION 2: ONE-STORY

CONCEPTUAL ELEVATIONS

SCALE : 1/16" = 1'-0"

Author	JP		
Checker	DG		
NO.	DATE	DESCRIPTION	BY
	1/30/01	REVISION No. 1	
	8/20/01	REVISION No. 2	

06285.00
 MAY 31, 2001
 Drawing No.

A-6

OF SHEETS